

FOR LEASE

# 662-672 ENTERPRISE ST

1,800 SF INDUSTRIAL SPACE AVAILABLE





# 664 ENTERPRISE ST PROPERTY HIGHLIGHTS



664 ENTERPRISE ST  
ESCONDIDO, CA 92029



TOTAL SF:  
± 1,800



LEASE RATE:  
\$1.40 NNN



M2  
ZONING



PARKING:  
2.89/1000



CEILING  
HEIGHT: 14'



POWER:  
800 AMPS



GRADE LEVEL DOOR  
8x8



YEAR BUILT:  
1970

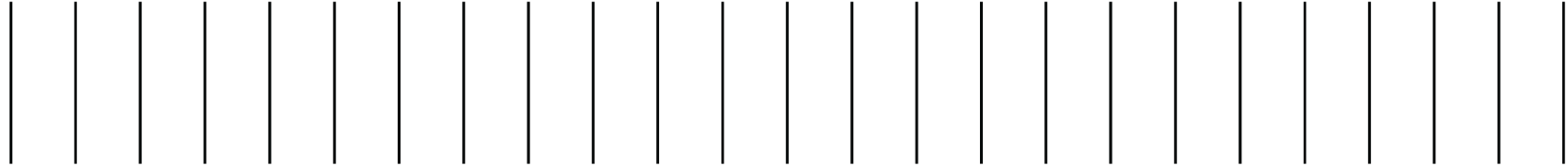
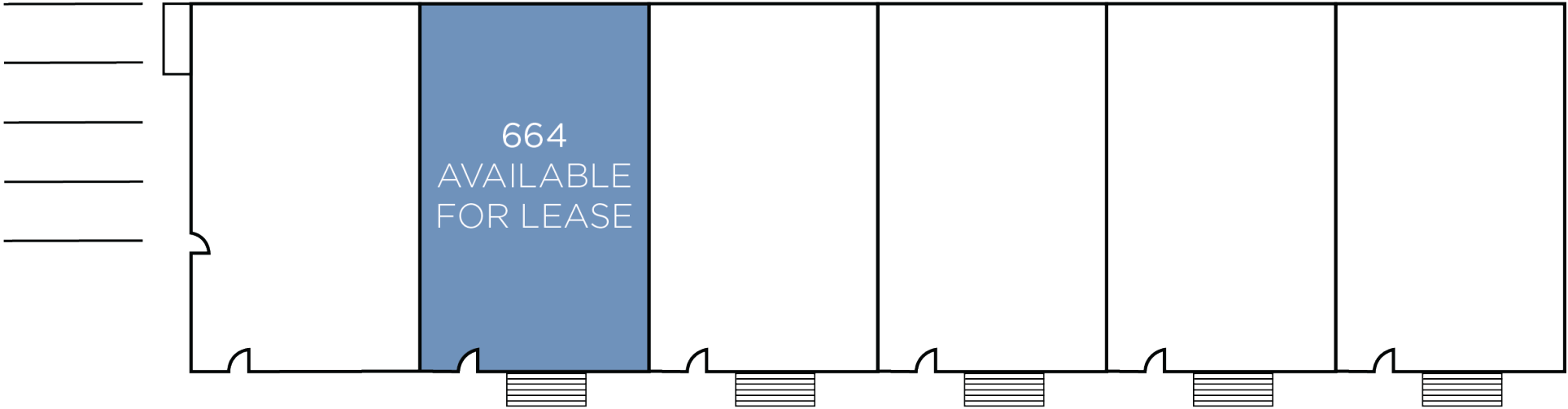


EXTERIOR  
PHOTOS





# FLOOR PLAN



# ESCONDIDO OVERVIEW

Escondido, meaning “hidden” in Spanish, gets its name from its shallow secluded valley located in the mountains of Southern California. Escondido is located 30 miles northeast and 18 miles inland of San Diego. Escondido is a diverse and lively community. It remains one of the oldest cities of San Diego and is full of history. It is a city of nearly 150,000 people with a very diverse population. With over 46,000 households and an average income of \$84,000, the community is rapidly growing. The market is affordable and becoming very competitive. Escondidos job market is also growing, which benefits the high percentage of employed residents. With lots of growth and opportunities, Escondido is now one of the largest cities in San Diego.



### ESCONDIDO INDUSTRIAL MARKET

8.4 MM SF INVENTORY	66.7K SF YTD NET ABSORPTION	270K SF AVAILABLE	3.2% AVAILABILITY RATE	2.1% DIRECT VACANCY RATE	\$1.32 DIRECT RENT



